



TEXAS A&M
AGRI LIFE
EXTENSION



4-H Club Meetings for October 2021

Tolar 4-H - 1st Tuesday of the month at 6:30 pm at the FNB of Tolar. See their [Facebook](#) pg. for updates.

Lipan 4-H - 1st Thursday of the month at 6:30 pm at the Community Center. See their [Facebook](#) pg. for updates .

Sharp Shooters 4-H - Meets every Tuesday of the month at 6:30 pm at the Reunion Fairgrounds. Regular business meeting on the 1st Tuesday of each month. See their [Facebook](#) pg. for meeting updates.

Young Riders - 2nd Tuesday of the month at 7:00 pm at Triple Cross Cowboy Church in the Youth Barn. See their [Facebook](#) pg.

Cornerstone 4-H - 2nd Wednesday of every month at 3 pm at Cornerstone Christian Academy.

Lake Granbury Community 4-H - 2nd Monday of the month at 7:00 pm at the Hood County Reunion Grounds. See [Facebook](#) pg

K9 & Kids— Meets 1st & 2nd Thursday night at 6 pm at Reunion Grounds. No dogs for the third meeting. 3rd Thursday is Business meeting @ Granbury Baptist Church. 4th & 5th Thursdays are TBA .You must bring a vaccination record for each dog. See their [Facebook](#) pg.

Food & Fashion—Meets the second Sunday of the month from 4-6 pm at the Annex I Meeting Room.

*** Please follow Hood County 4-H [Facebook](#) pg. for news and updates.***

ATTENTION

© Can Stock Photo

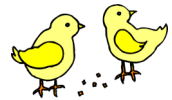
If you are not enrolled for 2021- 2022 in
4-H Online this will be your last
newsletter. Please make sure to enroll to keep up to date on up-
coming events. <https://v2.4honline.com>

Major Stock Show Entry Packets

Major Show Entry Night will be Wednesday, November 3, 2021 from 5-7PM at the Reunion Grounds. We will be there to help with Major Stock Show entries. You will need your Exhibitors SSN, Quality Counts #, all required signatures, & payment! All packets must be returned by 7PM on Wednesday November 3rd. Packets will also be available at the office if you'd prefer to complete them on your own prior to the deadline.

County Broiler Orders

If you want to show broilers at the 2022 Hood County Junior Livestock Show orders will be due on 10/7/2021. Chicks will be delivered 1:00 pm 11/23/2021. Please see HCLRA site for more information and check them out on [Facebook](#) as well.



County Only Validation Dates

This years county validation dates for exhibiting lambs, goats, swine, and heifers etc.. the Hood County Junior Livestock Show are as follows:



November 8 th	4:00 pm until 6:00 pm, Lipan - Ag Barn
November 9 th	4:00 pm until 6:00 pm, Tolar - Ag Barn
November 11 th	4:00 pm until 6:00 pm, Granbury - Ag Barn
November 13 th	8:00 am until Noon, Reunion Fairgrounds
(For Rabbits Only) December 4 th	8:00 am until Noon, Rabbit Validation at Fairgrounds

Fall Major Validation Dates

The Major Show Validation Dates for Sheep, Goats, Pigs, and heifer have been set for:

October 20- Major Lamb & Goat Validation 3-6pm @ Fairgrounds

October 26- Major Heifer Validation 4-6pm @ Tolar Ag Barn

November 8- Swine @ Lipan

All Swine

November 9—Swine @ Tolar

4-6 pm

November 11th—Swine @ Granbury

November 29 -Houston/Austin Swine Validation 4-6 @ Lipan

2022 Hood County Junior Livestock Show Judges

Rabbit - Anthony Bell

Goats - Denton Lowe

Cattle- Lyle Zoeller

Lambs - Tanner Barnes

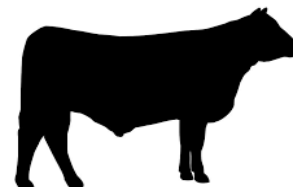
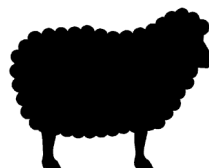
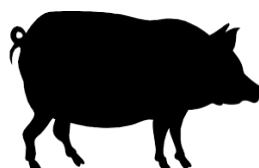
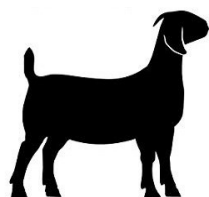
Broilers - Alisa Hairston

Skillathon—Dr. David Roper

Swine - Brandon Anderson

Ag Mechanics - Dillon Bradbury

Classifier— Todd Vineyard



Rabbit Workshop

Watch for more information coming on Facebook and Remind!



HCJLRS Rules

The rules for the 2022 County Stock show can be found on at: <http://www.hoodcountylivestockraisersassociation.org> under publications.

County Stock Show 3-Meeting Rule

If you want to show at the 2022 Hood County Junior Livestock Show you must attend 3 - 4-H Club Business Meetings prior to the show. This applies to ALL participants: livestock, family living, & ag mechanics.

Livestock Raisers Association

The HCLRA meets on the 3rd Thursday of every month at 7:30 pm at the fairgrounds.

We need more 4-H families to get involved with this group.

They make the rules for the county show, up-keep the facilities and provide us a place and opportunity to show our projects.

Next meeting is *October 21st, 2021.*

Holiday Classic November 6-7, 2021

The Holiday Classic is a free clinic and jackpot show held at the Bell County Expo in Belton. The event is hosted by the District 8 County Agents and is designed for young and early career showers. The event is open to all 4-H & FFA students. For more details contact London Fair –817.579.3280.



Please see flyer on next pg for more information.

Hood County 4-H Has a new Remind! Text @hoodcou to 81010 to join.



If you haven't already, please take time to re-enroll in 4-H . It is a MUST if you plan to participate in any contests or major shows. Please see the link below to get started.

<https://v2.4honline.com>

If you were in 4-H this past year, you already have a profile. DO NOT SET UP A NEW PROFILE. Enter your password and re-enroll. If your forgot your password, click “I forgot my password” it will send you a password and then you can log into your profile. When you re-enroll you will have to pay the \$25 participation fee. Please pay this with a credit card .

If you have any questions please let us know.



WHEN & WHERE?

November 6 & 7

Bell County Expo.
301 W. Loop 121
Belton, TX 76513

WHAT IS HOLIDAY CLASSIC?

The Holiday Classic Clinics and Prospect Shows are intended to provide a **FREE** educational opportunity for new families participating in the livestock project area. The main purpose is to teach the basic principles of livestock management as they relate to facility maintenance, selection, nutrition, animal health, handling, showmanship, and transportation, facilitate the ethical care, development, and exhibition of livestock.

WHO IS INVITED?

All 4-H and FFA members in grades 3-12

NO PEEWEE EXIBITORS!!

CONTACT:

254-933-5305
<https://agrilife.org/d84h/events-and-activities/holiday-classic/>

or call your local County
Extension Office

30th ANNUAL

HOLIDAY CLASSIC

Beef, Lamb, Goat & Swine
Clinic & Prospect Show

Saturday, November 6, 2021

- 6:00 am - Barns Open
- 11:00 am - All livestock must be in the barn
- 12:30 pm - General Session - Dr. David Frazier
- 1:30 - 4:00 pm - Individual Species Clinics
 - *Beef Speaker - Tyler Mackey*
 - *Lamb Speaker - Jimmy Key*
 - *Goat Speaker - Linda Thurman*
 - *Swine Speaker - Chase Sligh*
- 4:30 pm - Showmanship Contest
- 6:00 pm - Dinner provided by Holiday Classic

Sunday, November 7, 2021

- 7:15 am - Nondenominational Church Service
- 8:00 am - Prospect Show
 - *Beef Judge - Emily Williams (steers followed by heifers)*
 - *Lamb Judge - Joshua Smartt*
 - *Goat Judge - Marty Vahlenkamp*
 - *Swine Judge - Cody Holloway*



- **Youth must attend Saturday clinics to participate in showmanship and prospect shows.**
- **Free Saturday evening meal. Concession stands available.**

TEXAS A&M
AGRI LIFE
EXTENSION



Educational programs of the Texas A&M AgriLife Extension Service are open to all people without regard to race, color, religion, sex, national origin, age, disability, genetic information or veteran status. The Texas A&M University System, U.S. Department of Agriculture, and the County Commissioners Courts of Texas Cooperating. If you need any type of accommodation to participate in this program or have questions about the physical access provided, please contact your local Texas A&M AgriLife Extension Office at least two weeks prior to the event.

*Hood County 4-H
Food & Nutrition Project
Dates to Remember*

- * October 14th– Food Show & Food Challenge Interest Night/ Workshop*
- * November 1st– Registration for County Show*
- * November 18th-County Food Show and Food Challenge Competition -*
- * November 8th-26th– Registration is open for District*
 - Must qualify at county level to compete*
- * December 8th– District Food Show & Food Challenge*



Pumpkin Cheesecake Trifle

Ingredients

7 ounces cheesecake flavored instant pudding mix (2 packets)
4 c. 2% milk
30 ounces 100% pumpkin puree (canned)
1 tsp ground cinnamon
1/2 tsp ground cardamom
1/2 tsp ground cloves
3/4 tsp ground ginger
1 whole prepared angel food cake
1.5 c. pecan pieces (toasted)
1 ounce dark chocolate (at least 60% cocoa, chopped)

Nutrition Facts	
16 servings per container	
Serving size	1/2 cup (173g)
Amount per serving	
Calories	270
% Daily Value*	
Total Fat 9g	12%
Saturated Fat 2g	10%
Trans Fat 0g	
Cholesterol 5mg	2%
Sodium 390mg	17%
Total Carbohydrate 43g	16%
Dietary Fiber 1g	4%
Total Sugars 27g	
Includes 1g Added Sugars	2%
Protein 6g	
Vitamin D 0mcg	0%
Calcium 123mg	10%
Iron 1mg	6%
Potassium 190mg	4%
*The % Daily Value tells you how much a nutrient in a serving of food contributes to a daily diet. 2,500 calories a day is used for general nutrition advice.	

Instructions

1. Wash hands and clean the preparation area. Rinse lids of cans before opening.
2. Prepare the pudding according to package directions, chill to set while preparing other ingredients.
3. Combine the pumpkin puree and spices - cinnamon, cardamom, cloves, ginger.
4. Slice the angel food cake into bite-sized pieces.
5. In a large glass trifle dish, layer the ingredients as follows: pudding, pumpkin mixture, pecans, angel food cake. Continue until dish is full. Top with chocolate. Tip: Opt for a dish that is taller and slimmer than it is wide.
6. Chill for at least 30 minutes and serve. Trifle can be kept for 2-3 days in the refrigerator, but its best eaten the day it's made.



**DINNER
TONIGHT**
TEXAS A&M AGRILIFE EXTENSION

OCTOBER BIRTHDAYS!!!!

Cash Williams
Hannah Hughes
Iris Goolsbee
Kinley Smith
Garrett Goolsbee
Cooper Swaim
Arabella Malone
Evelette Taylor
Remington Taylor



October 2021

Sun	Mon	Tue	Wed	Thu	Fri	Sat
					1	2
3	4	5	6	7	8	9
10	11	12	13	14	15	16
17	18	19	20	21	22	23
24	25	26	27	28	29	30
31						

OCTOBER
11—Office Closed
14- Food Show/Food Challenge Interest Night
20- Major Sheep & Goat Validation
27-Major Heifer Validation

November 2021

Sun	Mon	Tue	Wed	Thu	Fri	Sat
	1	2	3	4	5	6
7	8	9	10	11	12	13
14	15	16	17	18	19	20
21	22	23	24	25	26	27
28	29	30				

NOVEMBER
3- MAJOR STOCK SHOW ENTRY NIGHT 5:00—7
5-Ag Product/Quiz Bowls
6 & 7 Holiday Classic
8- Major Hog Validation —County Validation @ Lipan
9- Major swine Validation @ Tolar
11-Office Closed- Veterans Day Swine @ Granbury
13—County Validation @ Granbury
15 Adult Leader/County Council
18- County Food Show/ Food Challenge
25-26 Office Closed— Thanksgiving
29—Houston/Austin Swine Validation @ Lipan

Texas A&M AgriLife Extension Service – Hood County Office

Phone (817) 579-3280 Fax (817) 408-2533

[Http://hood.agrilife.org](http://hood.agrilife.org)

Hannah Hoffman-CEA-FCH hannah.hoffman@ag.tamu.edu

London Fair- CEA-Ag/NR london.fair@ag.tamu.edu